



5 Compression Settings

- No Changes

6 Marks and Bleeds Settings

- Enable All Printer's Marks
- Set Offset to 0.125 in
- Set Bleed to 0.125 in on Top, Bottom, Inside and Outside

7 Output Settings

- No Changes

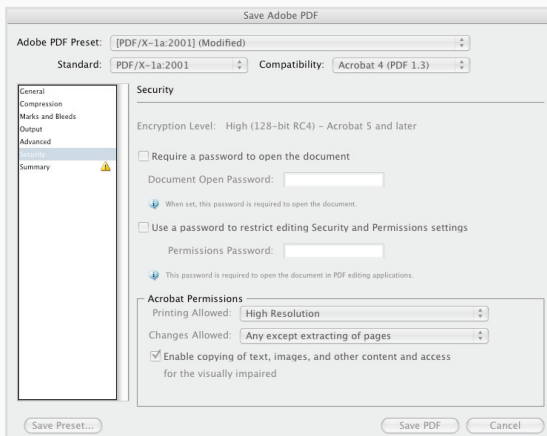
8 Advanced Settings

- No Changes



9 Security Settings

- No Changes



10 Summary

- Please review your settings before clicking the **Save PDF** button

